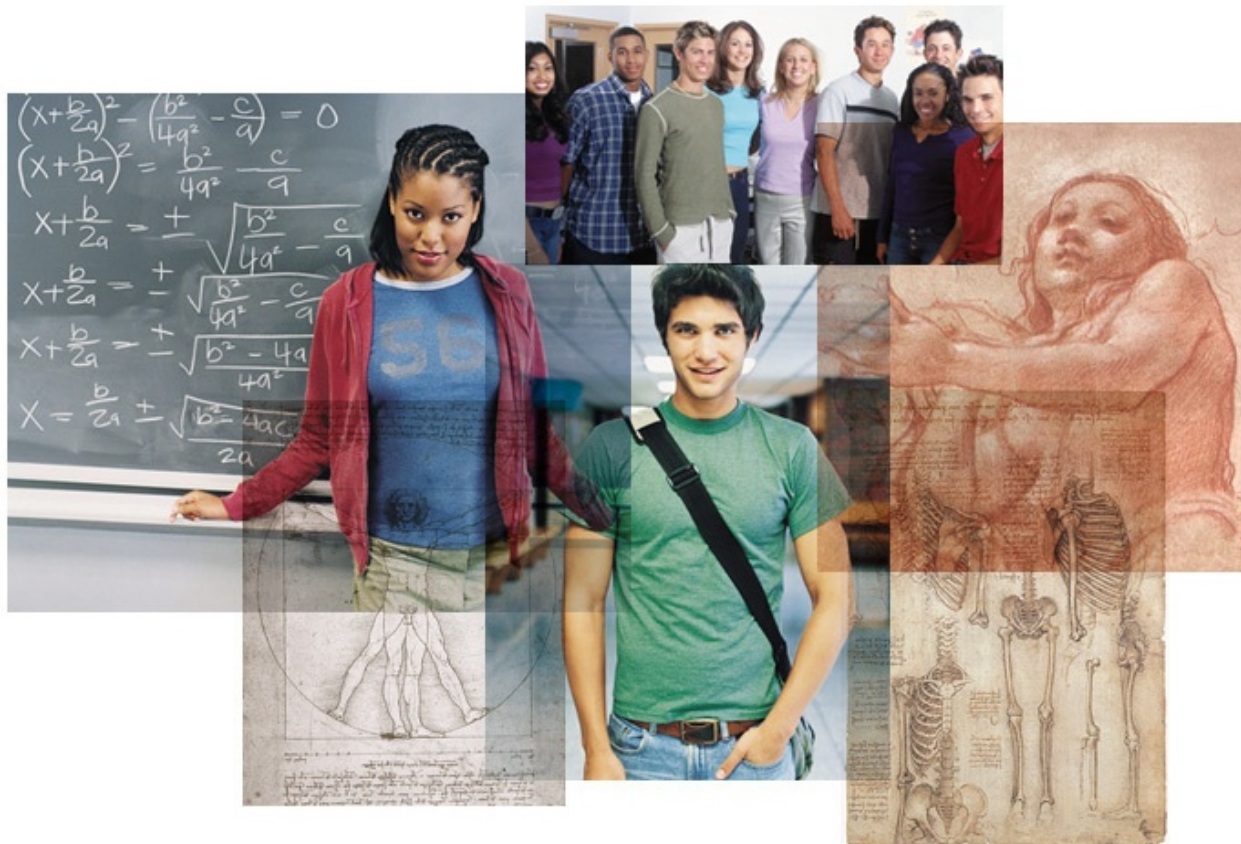


Itineris and Salt Lake Community College



Itineris and Salt Lake Community College



- Accuplacer Scores/Placement
- Concurrent Enrollment
- On-Campus Concurrent Enrollment
- Early Enrollment
- Summer 2012 Course Options
- My Page/Registration Process
- Trouble-shooting
- Questions
- Two year degree planning begins in Fall 2011

Itineris and Salt Lake Community College

College Placement Tests

- SLCC uses the Accuplacer assessment to determine college placement
- Both Math and English Accuplacer scores are required
- Most Itineris courses and summer class options require specific Accuplacer scores



Itineris and Salt Lake Community College

College Placement Tests

- Accuplacer results are used at Itineris to determine student schedules/course selections during Fall semester
- To *test at* the MATH 1010 level, students must score a 54 or higher on Elementary Algebra
- To *take* MATH 1010, students must also score a 58 or higher on Reading Comprehension and have successfully completed Intermediate Algebra (Algebra II) in high school



Itineris and Salt Lake Community College

College Placement Tests

- To *test at* the ENGL 1010 level, students must score an 81 or higher on Reading Comprehension (ENGL 1010 is not offered until the summer after junior year)
- Most Itineris courses require an 81 or higher on Reading Comprehension as a prerequisite
- If you did not test into either ENGL 1010 or MATH 1010 you may want to consider retaking the Accuplacer
- ACT scores can also be used for placement purposes; Itineris will pay for you to take the October ACT



Itineris and Salt Lake Community College

Retaking the Accuplacer

- Must be done at an SLCC Assessment Center (Jordan Campus assessment center in the HTC building)
- No appointment necessary
- Must pay fee to re-take the Accuplacer
- Must present Photo ID to re-test



Itineris and Salt Lake Community College

Retaking the Accuplacer

- Assessment Center Times:
 - Mon-Thur: 8 am to 8 pm
 - Friday: 8 am to 4:30 pm
 - No test can be started later than 2 hours before the test center closes
- Limited number of Accuplacer retakes per semester
- Be sure to give a copy of all Accuplacer retakes to Itineris



Itineris and Salt Lake Community College

Help with the Accuplacer



- Helpful Websites:

- www.collegeboard.com/student/testing/accuplacer
- www.actstudent.org/testprep/index.html
- www.number2.com
- www.accuplacer-test.com
- www.studyguidezone.com/accuplacertest.htm

- Placement Test Strategies Workshop:

- October 12– 12:00pm – Jordan Campus (HTC 101-C)
- October 26 – 4:00pm– Redwood Campus (STC 223)
- Call 801-957-4978 for more info

Itineris and Salt Lake Community College

Concurrent Enrollment

- College-level classes offered to high school students for *both* high school and college credit
- No tuition is charged
- Students are responsible for any special course fees (i.e., lab fees)



Itineris and Salt Lake Community College

Concurrent Enrollment

- Itineris provides textbooks at no charge
- Course availability limited
- Courses may require Accuplacer or other prerequisites



Itineris and Salt Lake Community College

On-Campus Concurrent Enrollment

- Allows high school students to take evening classes at SLCC during Fall and Spring semesters, as well as day classes during the Summer
- Courses provide *both* high school and college credit
- No tuition is charged, but students are responsible for special fees, books, and transportation



Itineris and Salt Lake Community College

On-Campus Concurrent Enrollment

- Students take courses with SLCC students and instructors
- Limited seats and course availability
- Students must attend a registration meeting @ SLCC to have access to courses
- Courses may require an Accuplacer score or other prerequisites



Itineris and Salt Lake Community College

Early Enrollment

- Allows high school students to attend regular SLCC courses prior to h.s. graduation
- Credits *may* be applied toward both college and high school graduation
- Students are responsible for full tuition, fees, books, and other expenses (EE students are not eligible for SLCC financial aid or scholarships)
- Greater course selections, more available seats



Itineris and Salt Lake Community College

2011-2012 Tuition and Fees

• 1 credit	=	\$163
• 2 credits	=	\$290
• 3 credits	=	\$417
• 4 credits	=	\$544
• 5 credits	=	\$671
• 6 credits	=	\$798
• 7 credits	=	\$ 925
• 8 credits	=	\$1,052
• 9 credits	=	\$1,179
• 10 credits	=	\$1,306
• 11 credits	=	\$1,416
• 12 – 18 credits	=	\$1,526



Itineris and Salt Lake Community College

Early Enrollment

- EE students must demonstrate college-level proficiency by placing in ENGL 1010 and MATH 1010 on the Accuplacer
- Students must apply to take EE courses and bring all required documents to EE Advisor by the college deadline
- The EE application deadline is three weeks before the semester/term begins – No Exceptions
- Please allow one week for paperwork processing



Itineris and Salt Lake Community College

Early Enrollment

Required Early Enrollment Documents:

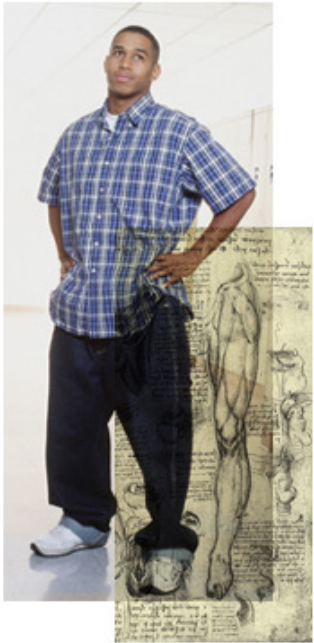
- SLCC Admission Application (not the CE application)
- Accuplacer or ACT scores
- Parent Permission Form (can be found at www.slcc.edu/earlyenrollment under 'Forms')
- High School Permission Letter (Ms. Ning can provide you with the letter)
- High School Transcript



Itineris and Salt Lake Community College

Summer Course Offerings

- Recommended summer courses are those required for the A.S. degree that are not currently offered by Itineris:
 - Lifelong Wellness (LW):
HLAC courses
 - Interdisciplinary (ID)
 - Diversity (DV)
 - Computer Literacy (CL)
- Can also take courses counting for elective credit toward the A.S. degree



Itineris and Salt Lake Community College

Early Enrollment Summer Courses

- **Recommended:**

- 1 HLAC course (also counts toward h.s. Elective PE requirement)
- ID or DV course. The following courses meet both requirements:
 - COMM 2150 – Intercultural Communication
 - HLTH 1110 – Social Health/Diversity
 - LE 1360 – Opening Diverse Doors
 - PHIL 1200 – Diversity/Philos. of Work
 - CIS 1020



Itineris and Salt Lake Community College

Helpful Hints for EE

- Remember that Summer course can be taught in:
Eleven Week Term (April 30 – August 3)
Eight Week Term (June 4 – August 3)
- Complete the Early Enrollment application and submit it by the following **deadlines**:

Eleven Week Term – April 9th 2012

Eight Week Term – May 14th 2012

*Preference is to have application submitted by the end of March to get best course selection. Registration will begin in April.



Itineris and Salt Lake Community College

Helpful Hints for EE

- Set up your MyPage Account:
 - <http://mypage.slcc.edu/cp/home/loginf>
 - Click: “Get your username and password”
- Find the correct CRN (course registration number) for the section you would like to enroll in
- Remember to pay tuition and fees by the deadline



Itineris and Salt Lake Community College

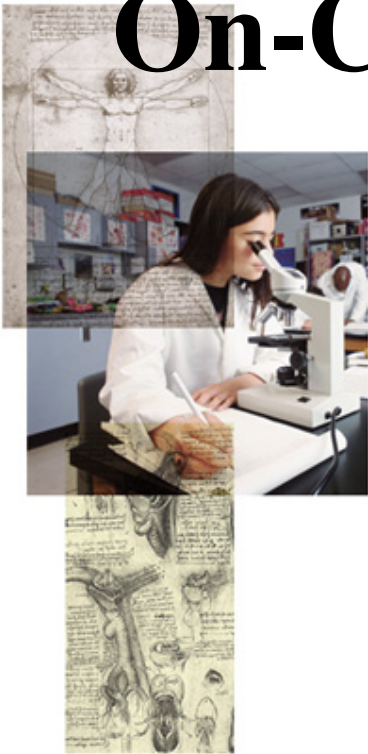
On-Campus CE Summer Courses

- **Recommend one or more of the following*:**

- BIOL 1090 – Human Biology
- BUS 1050 – Foundations of Business
- FIN 1050 – Personal Finance
- MUSC 1010 – Intro to Music
- PHYS 1010 – Elementary Physics

*Students must not enroll in BIOL 1010, CHEM 1010 or any MATH course as these will be part of the curriculum at Itineris

- Remember, some courses may require Accuplacer prerequisites



Itineris and Salt Lake Community College

Hints for CE On-Campus

- Sign-up online for an application meeting (www.slcc.edu/concurrentenrollment/CEOnCampus.asp)
 - February and March 2012 for Summer Courses.
- Follow all instructions given at the registration meeting.



Itineris and Salt Lake Community College

Registration Troubleshooting

- Cannot log onto MyPage – call SLCC IT Dept. 801-957-5555
- Class is closed – A class is considered closed if a letter “C” appears by the course you want to add.
- Prerequisite/Test Score Error – You do not have a qualifying score to enroll
- Other errors – call the SLCC Data Center at 801-957-4283 OR the SLCC Concurrent Enrollment office at 801-957-4945
- **Registration for Summer term will begin in April 2012** - Need to complete the SLCC online orientation, which can be found at www.slcc.edu/orientation/NetConnect.asp



Itineris and Salt Lake Community College



Which Pathway is the Best Fit for YOU?